

ios



Leica DISTO™ Sketch

## Leica DISTO™ sketch App How to use – step by step guide

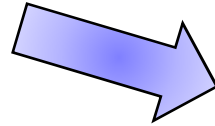
Screenshots from iPad Mini

- when it has to be **right**

**Leica**  
Geosystems



Leica DISTO™ D510



iPhone 4S



iPhone 5



iPad Gen. 3 and Gen. 4



iPad mini



iPod touch



# Leica DISTO™ sketch iOS on an iPad mini

## How to install

1. Visit the iTunes Store on your iOS device and search for «leica disto»
2. Download and install the DISTO™ sketch app



# Leica DISTO™ sketch iOS on an iPad mini

## How to install

3. Start the downloaded and installed Leica DISTO™ Sketch App on your iOS device



# Leica DISTO™ sketch iOS on an iPad mini

## How to start

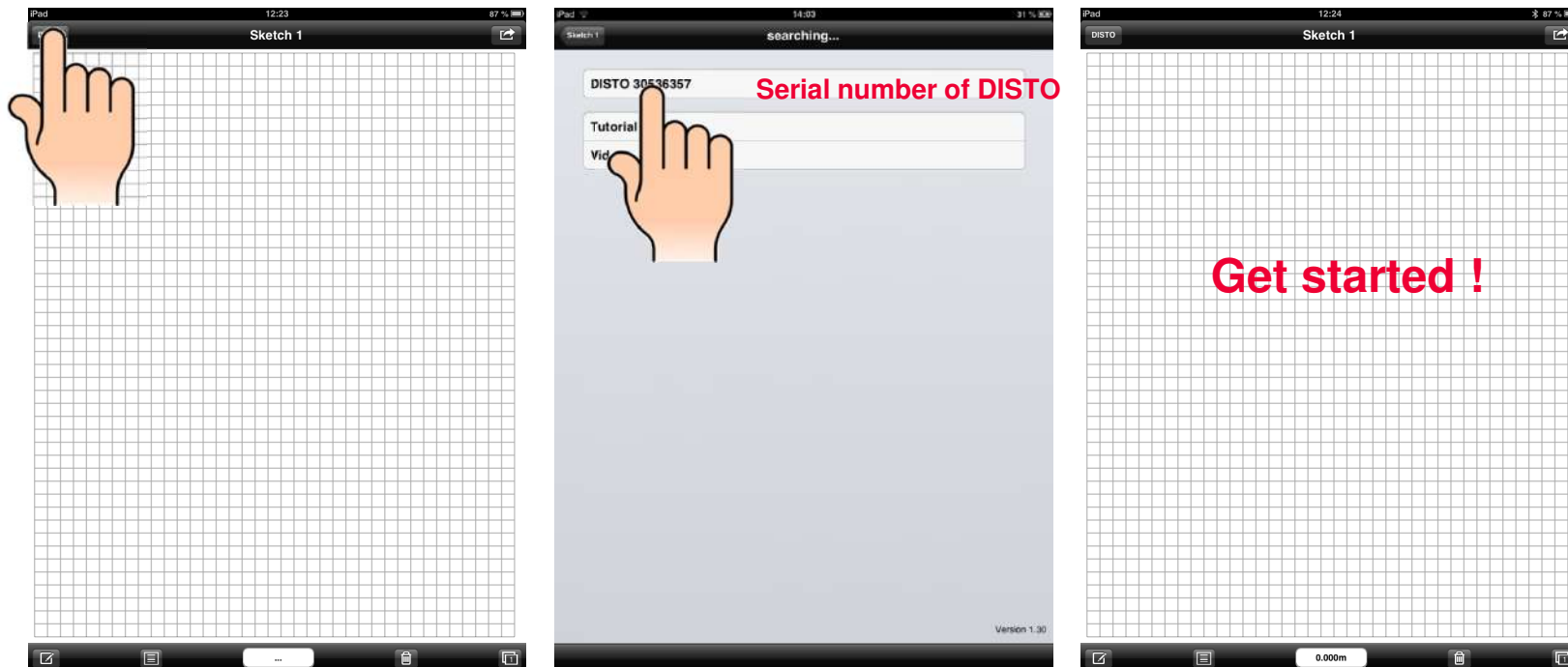
4. Follow the tutorial or click done if you want to cancel



# Leica DISTO™ sketch iOS on an iPad mini

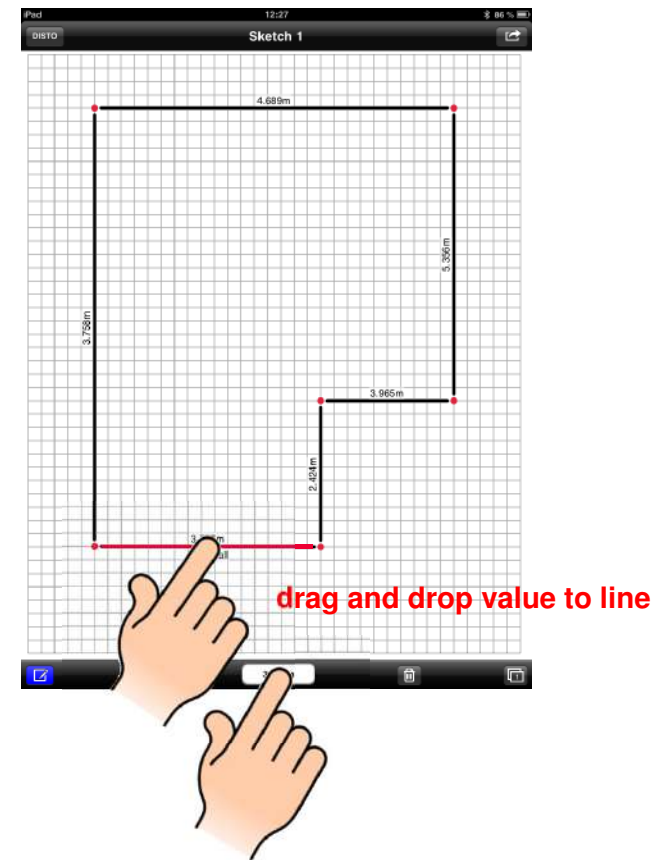
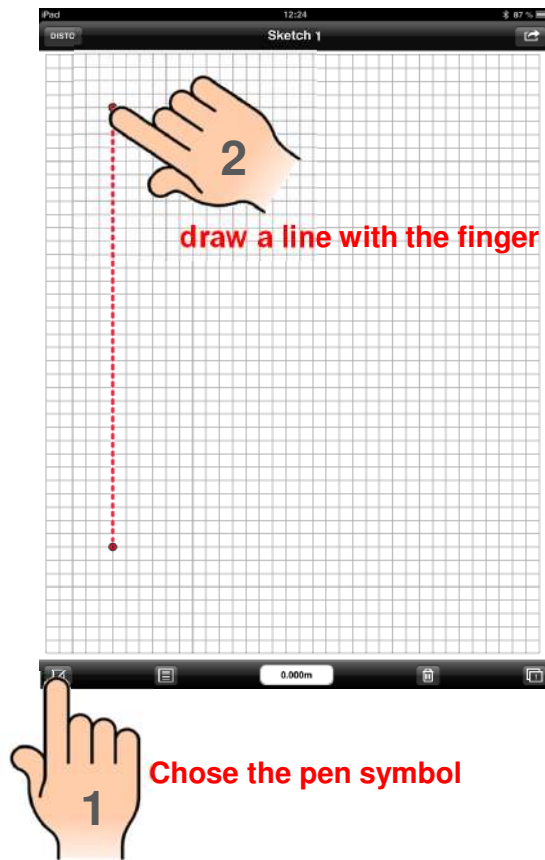
## How to connect to Leica DISTO™

### 4. Connect to your Leica DISTO™ (only required for initial connection)



# Leica DISTO™ sketch iOS on an iPad mini

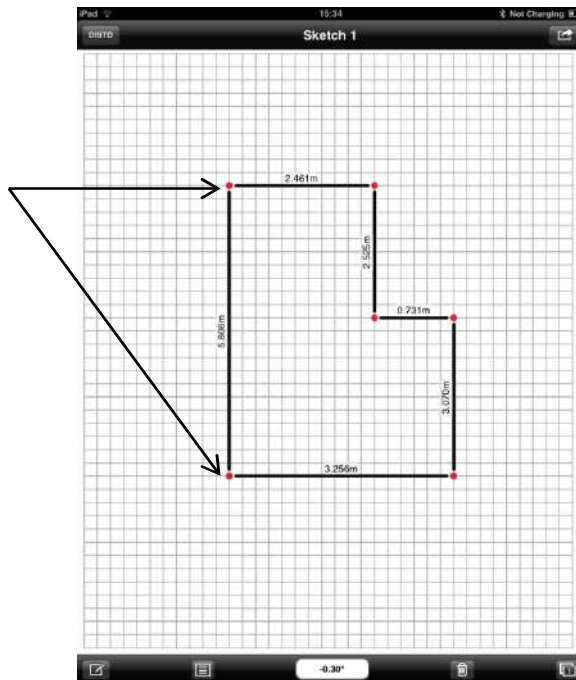
## Start Layout – transfer measurements



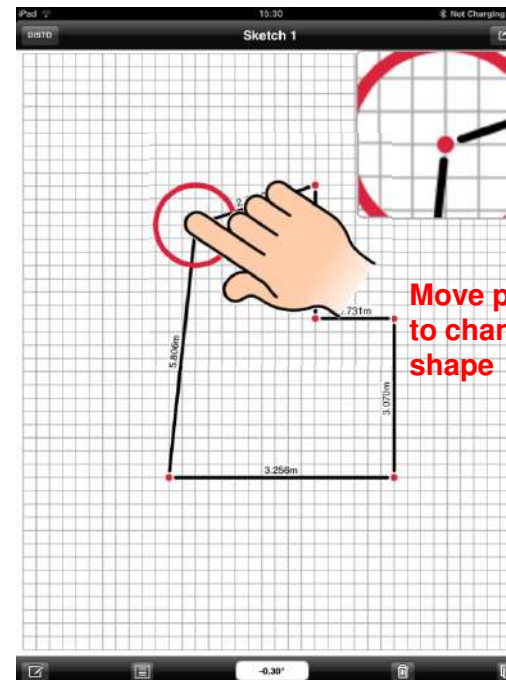
# Leica DISTO™ sketch iOS on an iPad mini

## Start Layout – Change layout

Points of lines get linked together



Magnification helps for accurate positioning when moving points



Move points to change shape

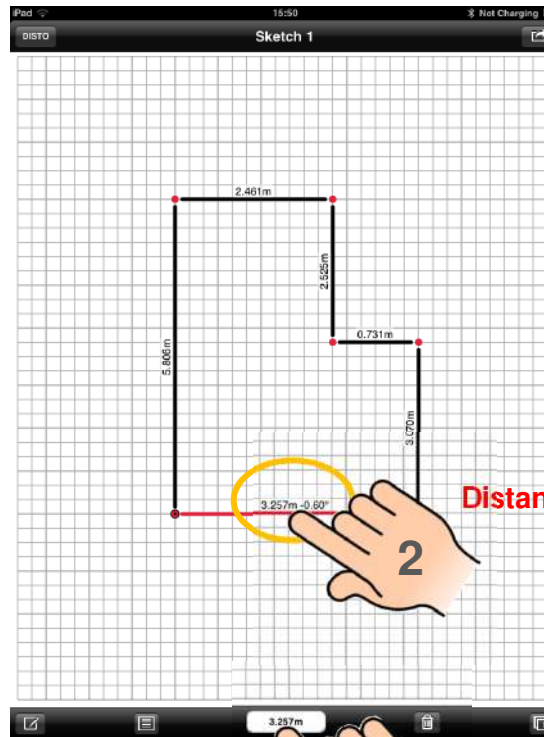


# Leica DISTO™ sketch iOS on an iPad mini

## Start Layout – Distances incl. Inclination



Switch on level in setting of Leica DISTO™



Distance appears incl. Inclination at line

drag and drop value to line

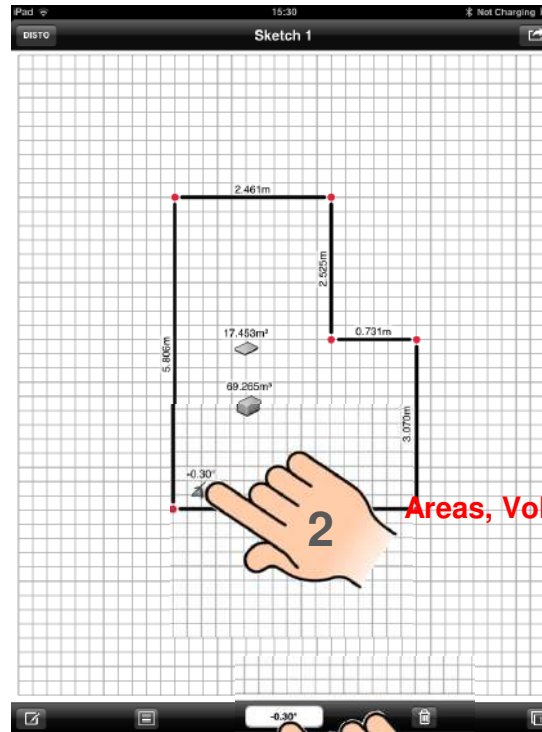
9

# Leica DISTO™ sketch iOS on an iPad mini

## Start Layout – Transfer other values from DISTO™



Press equal key for sending actual value in main line of DISTO™

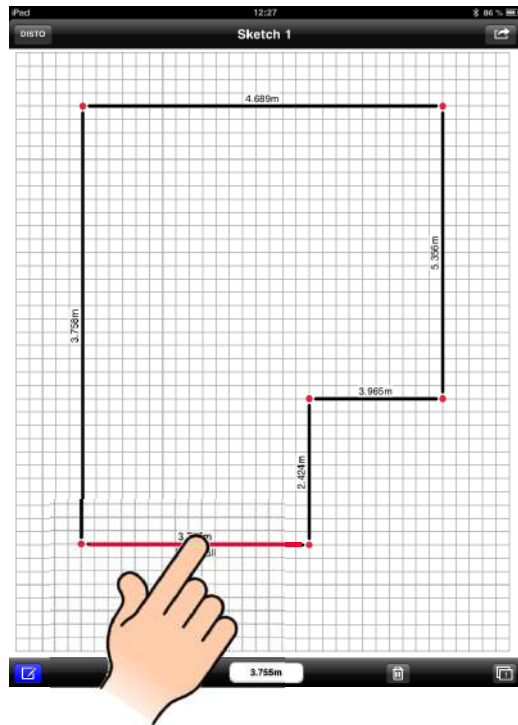


Areas, Volumes and Inclinations are added with a symbol

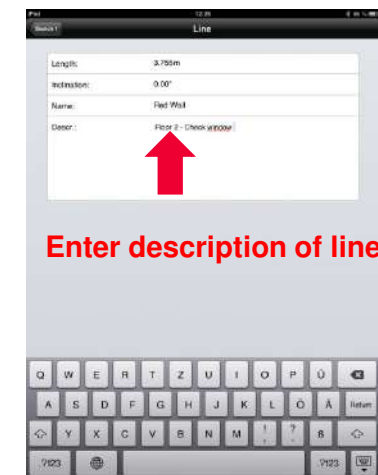
- drag and drop value
- to a line if it is a distance
- to any position if it is an area, volume or inclination

# Leica DISTO™ sketch iOS on an iPad mini

## Name and Description for Line

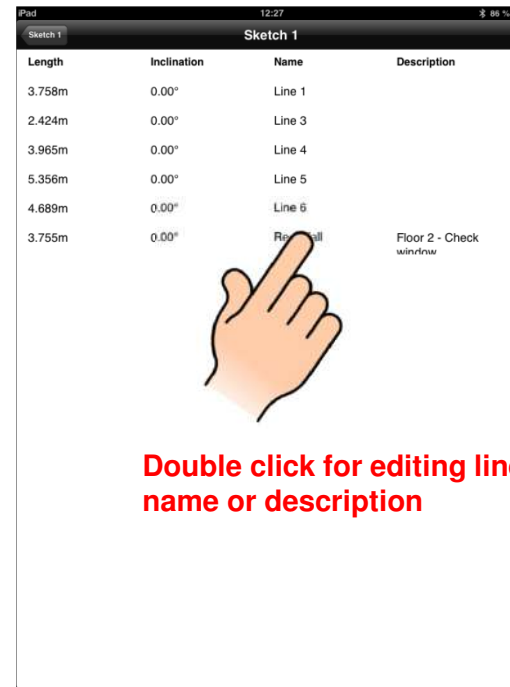
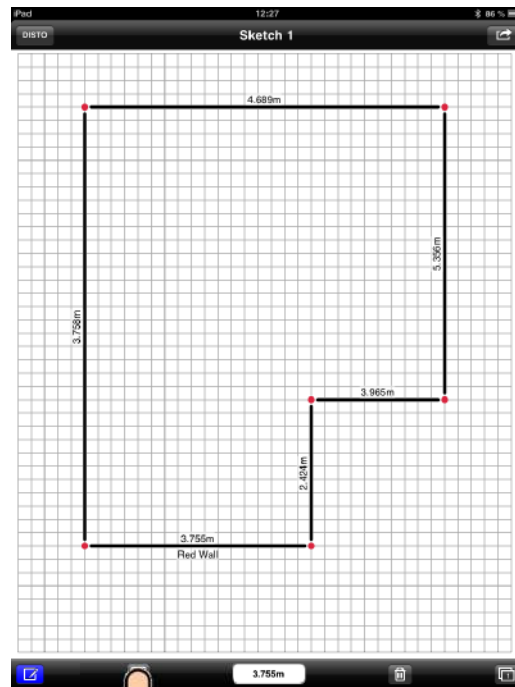


Double click line



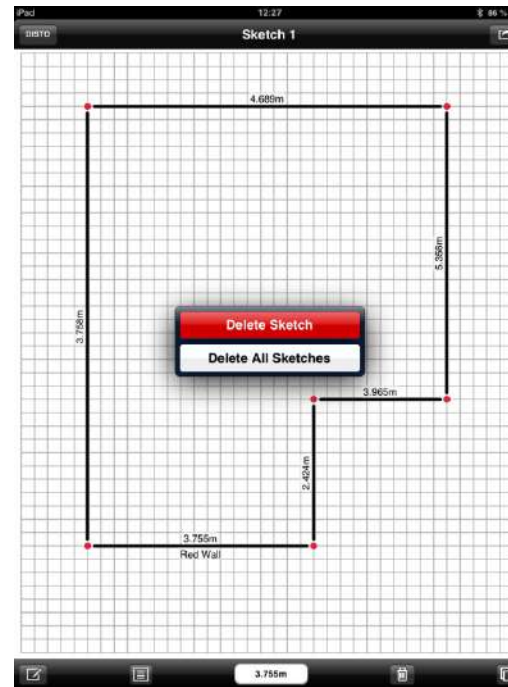
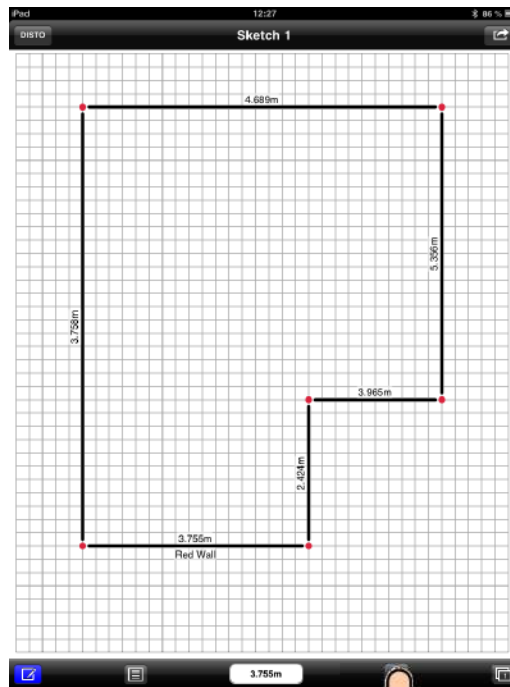
# Leica DISTO™ sketch iOS on an iPad mini

## Overview



# Leica DISTO™ sketch iOS on an iPad mini

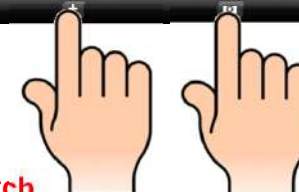
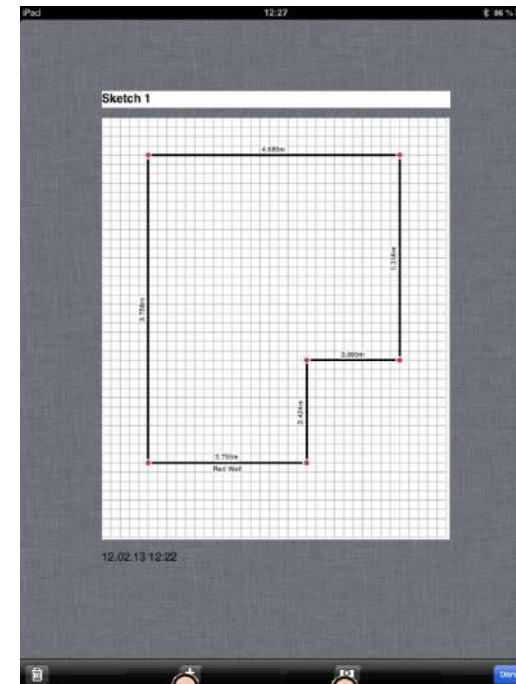
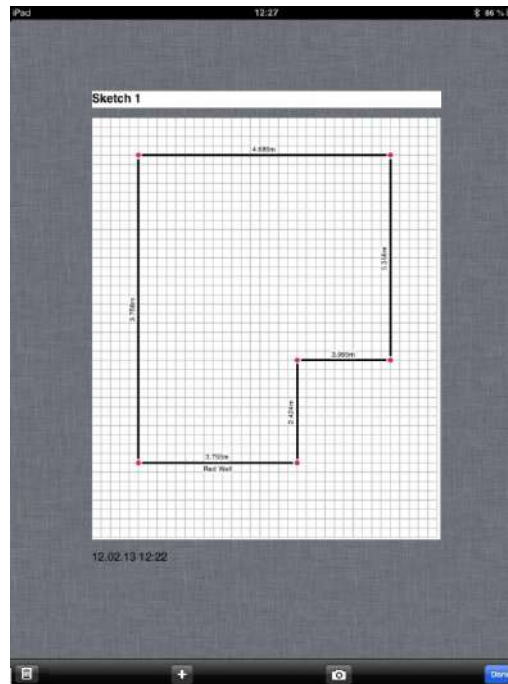
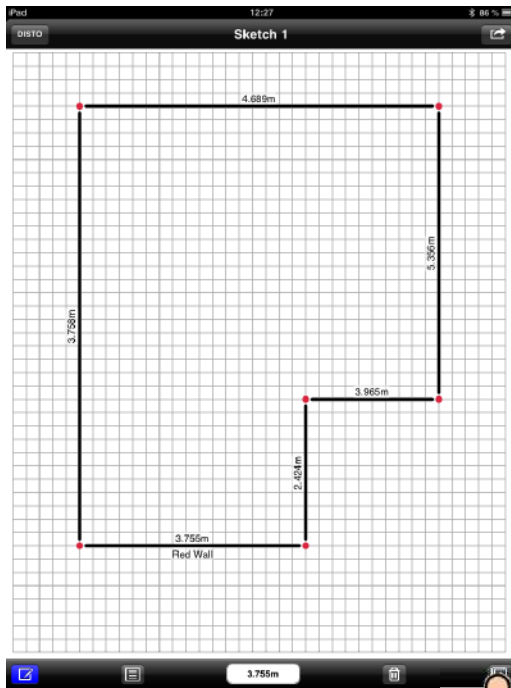
## Delete single Sketch or all Sketches for new job



Deletes selected lines  
or  
opens menu to delete sketches

# Leica DISTO™ sketch iOS on an iPad mini

## Adding new Sketch

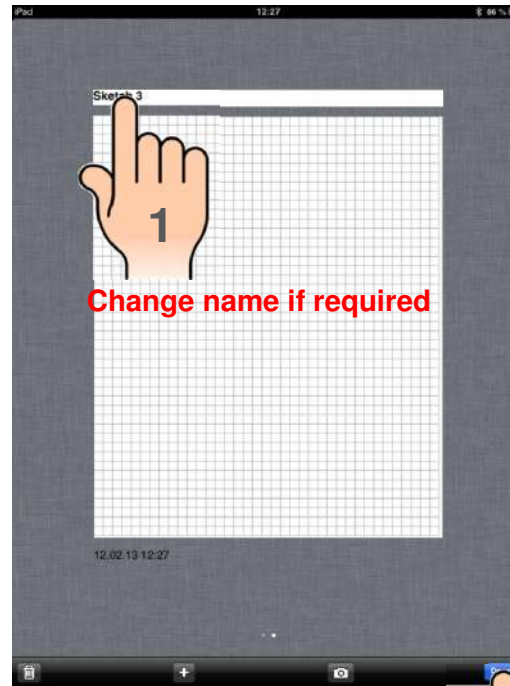
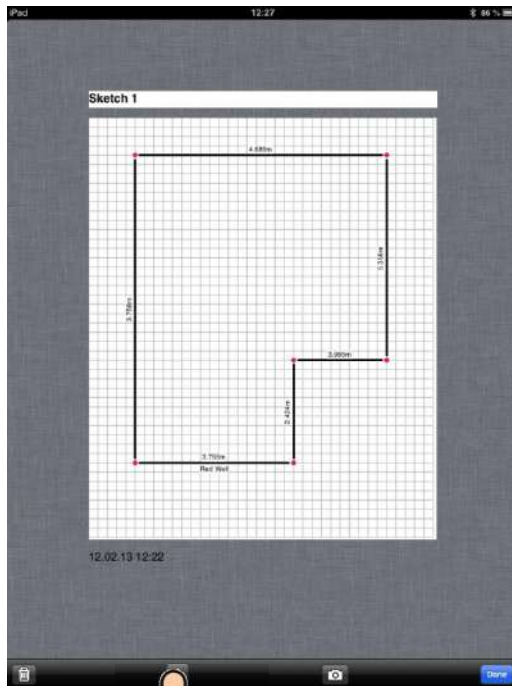


Choose Sketch  
(gridded paper)

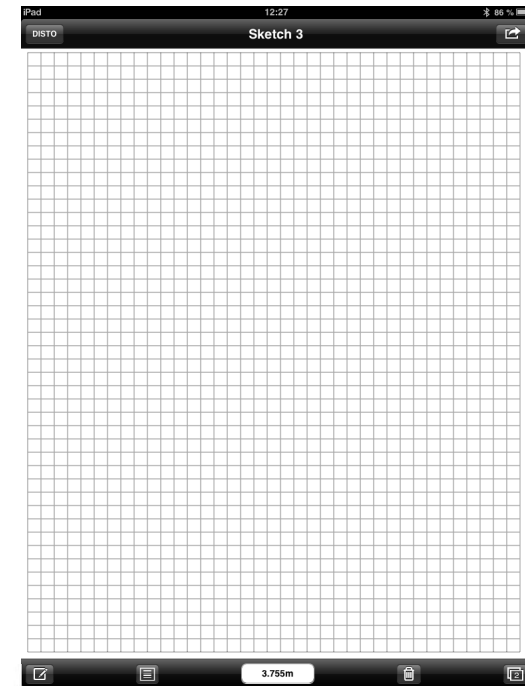
Choose for Picture  
or Gallery import

# Leica DISTO™ sketch iOS on an iPad mini

## Adding new Sketch – Sketch (gridded paper)

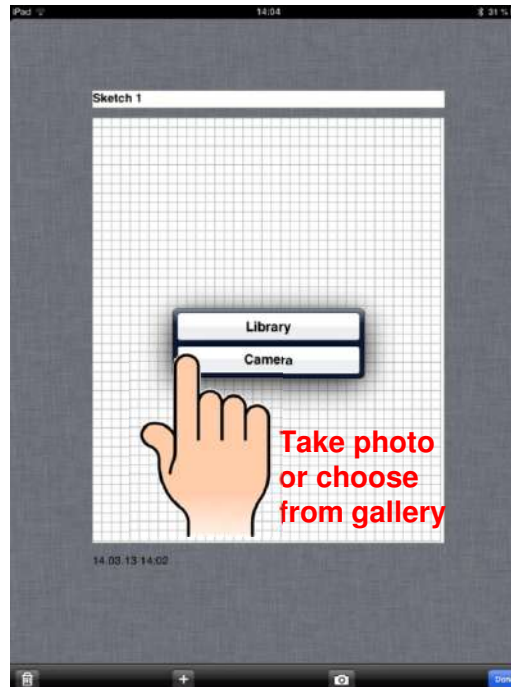
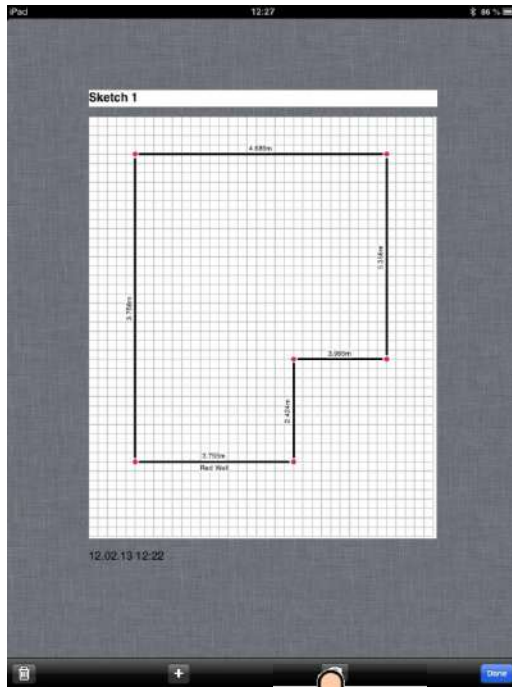


Change name if required

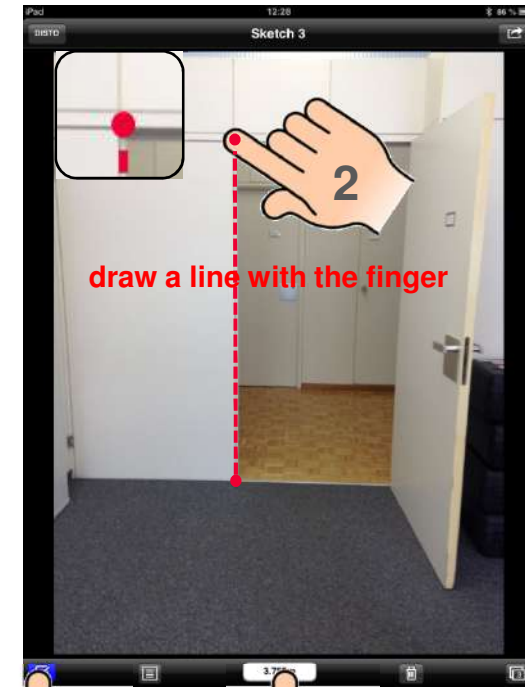


# Leica DISTO™ sketch iOS on an iPad mini

## Adding new Sketch – Sketch (take photo)



Take photo  
or choose  
from gallery



draw a line with the finger



Chose the pen  
symbol



drag and drop  
value to line

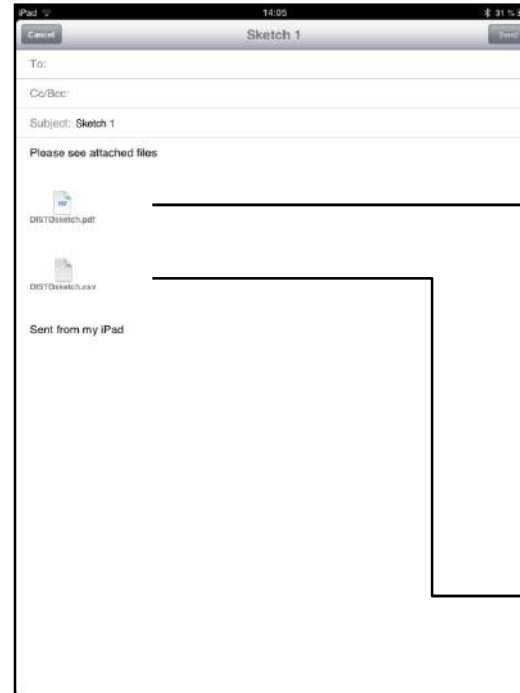
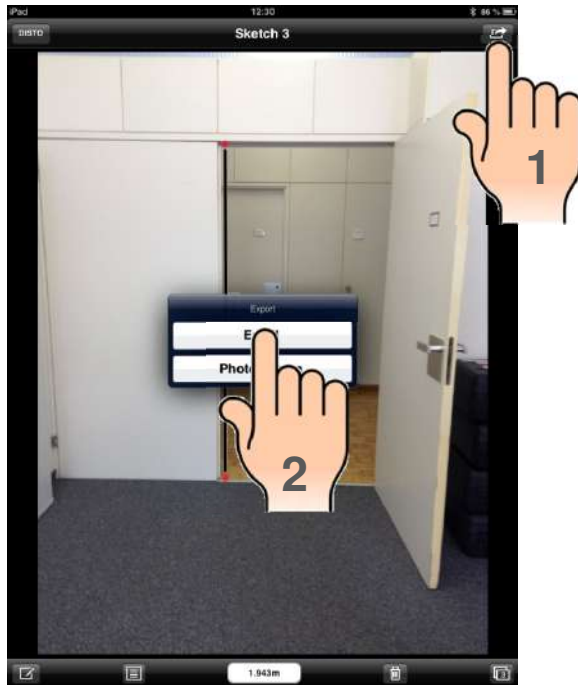
- when it has to be right

**Leica**  
Geosystems



# Leica DISTO™ sketch iOS on an iPad mini

## Export – Email



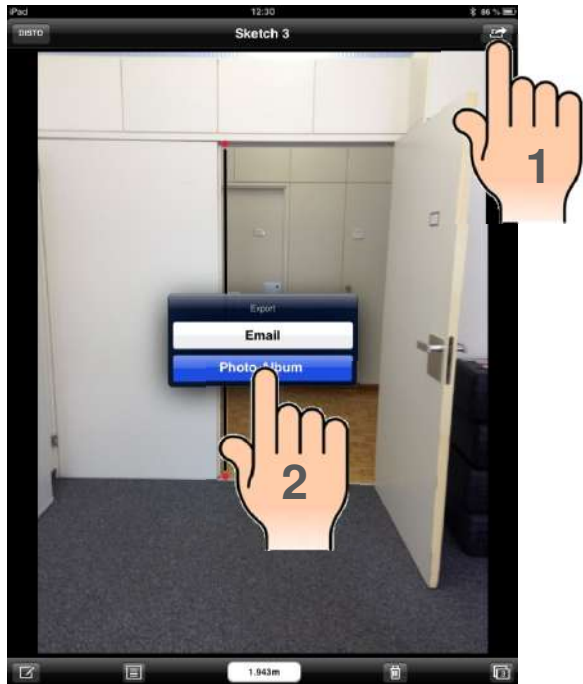
	A	B	C	D
1	Länge	Neigung	Name	Beschreibung
2	4,702m	0.00°		
3	2,527m	0.00°	Line 2	
4	2,134m	0.00°	Line 3	
5				
6				
7				

### Import:

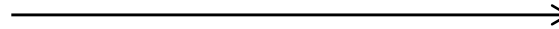
- Start Excel
- Import data from text
- chose filename
- chose semicolon as separator

# Leica DISTO™ sketch iOS on an iPad mini

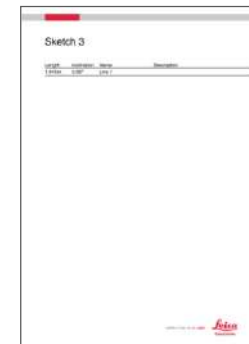
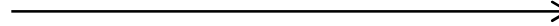
## Export – Photo Album



png – file for download



png – file for download



# Leica DISTO™ sketch iOS on an iPad mini

See Tutorial or DISTO™ sketch Video on YouTube

