

ios



Leica DISTO™ Sketch

Leica DISTO™ sketch App How to use – step by step guide

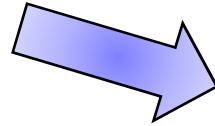
Screenshots from iPad Mini

- when it has to be **right**

Leica
Geosystems



Leica DISTO™ D510



iPhone 4S



iPhone 5



iPad Gen. 3 and Gen. 4



iPad mini



iPod touch



Leica DISTO™ sketch iOS on an iPad mini

How to install

1. Visit the iTunes Store on your iOS device and search for «leica disto»
2. Download and install the DISTO™ sketch app



Leica DISTO™ sketch iOS on an iPad mini

How to install

3. Start the downloaded and installed Leica DISTO™ Sketch App on your iOS device



Leica DISTO™ sketch iOS on an iPad mini

How to start

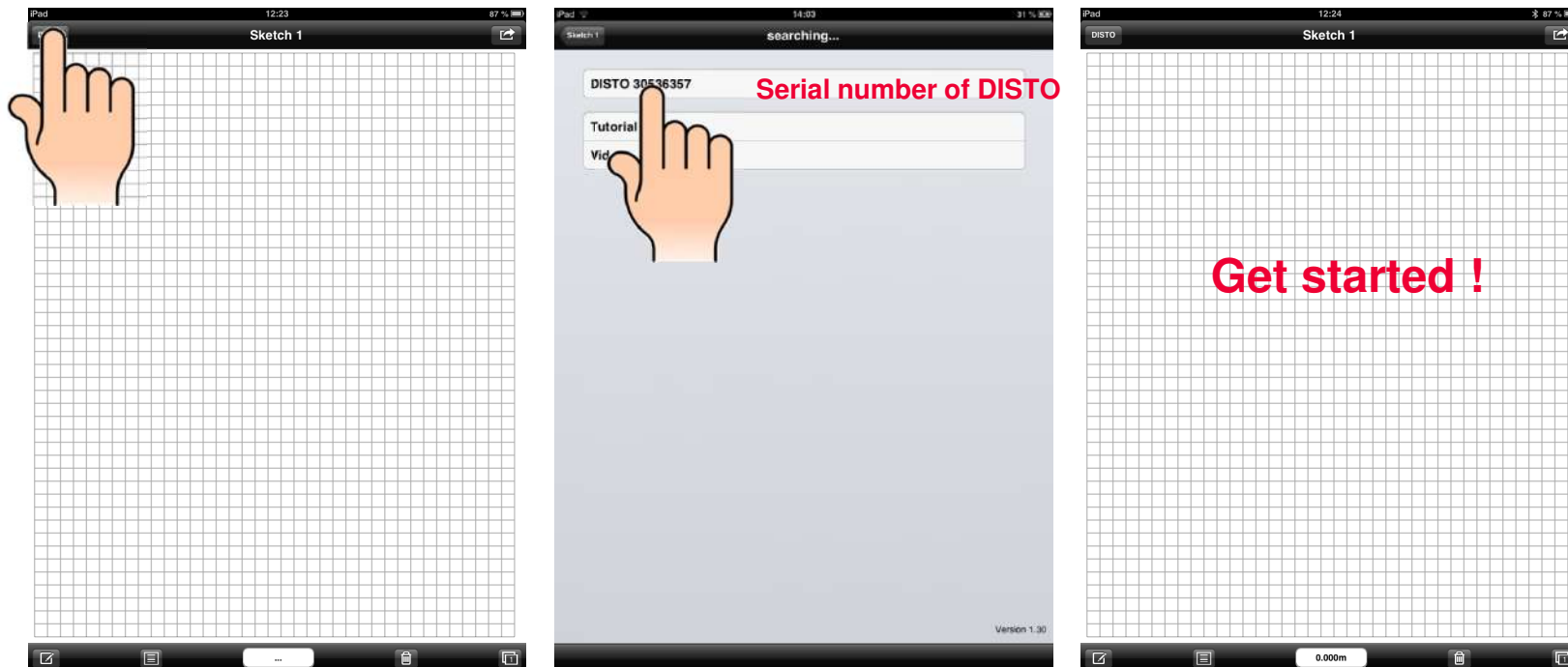
4. Follow the tutorial or click done if you want to cancel



Leica DISTO™ sketch iOS on an iPad mini

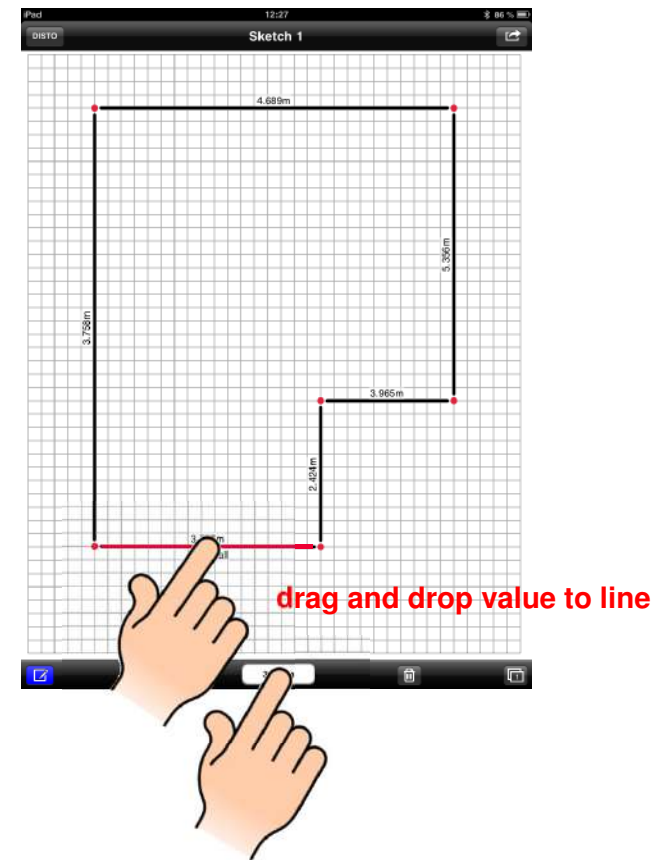
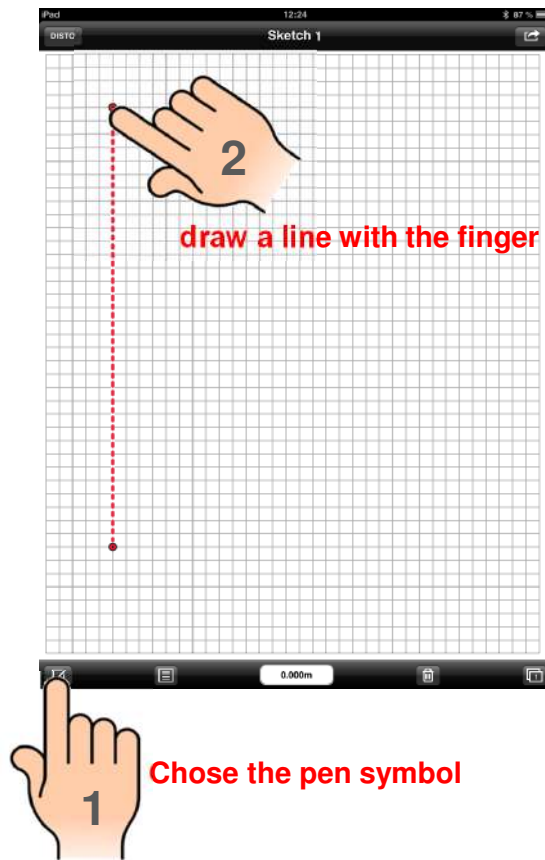
How to connect to Leica DISTO™

4. Connect to your Leica DISTO™ (only required for initial connection)



Leica DISTO™ sketch iOS on an iPad mini

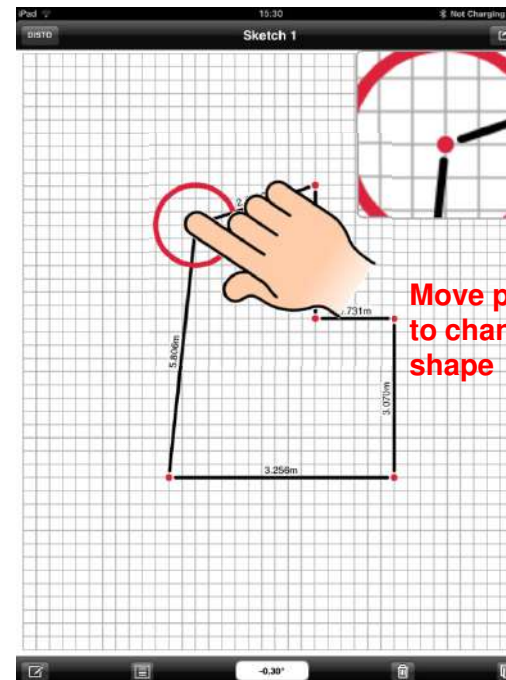
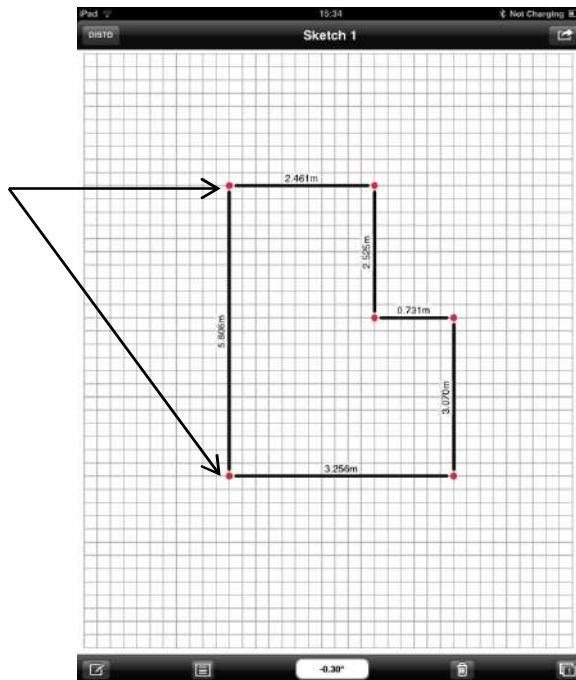
Start Layout – transfer measurements



Leica DISTO™ sketch iOS on an iPad mini

Start Layout – Change layout

Points of lines get linked together

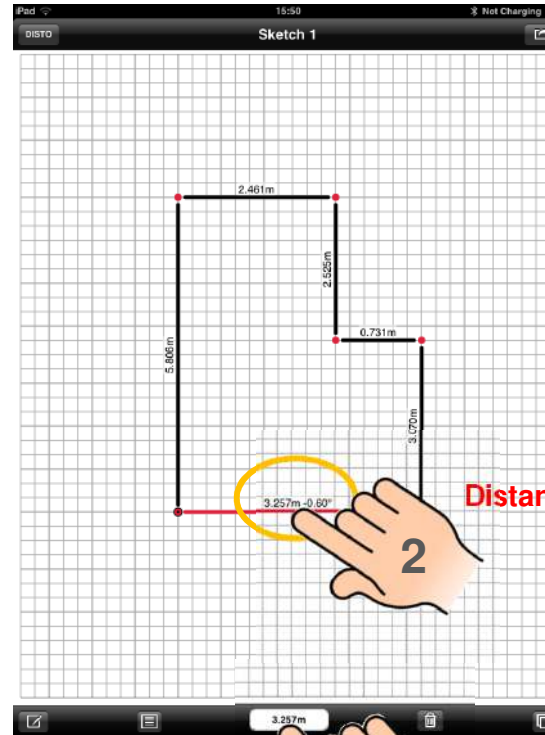


Leica DISTO™ sketch iOS on an iPad mini

Start Layout – Distances incl. Inclination



Switch on level in setting of Leica DISTO™



Distance appears incl. Inclination at line

drag and drop value to line

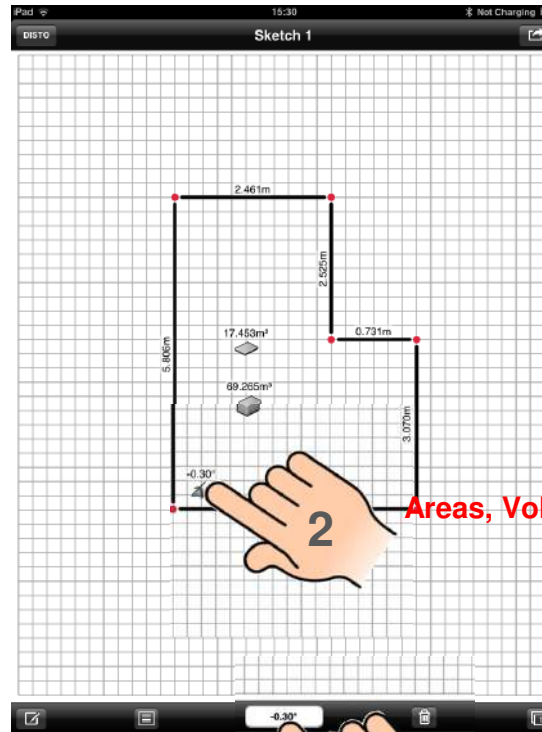
9

Leica DISTO™ sketch iOS on an iPad mini

Start Layout – Transfer other values from DISTO™



Press equal key for sending actual value in main line of DISTO™

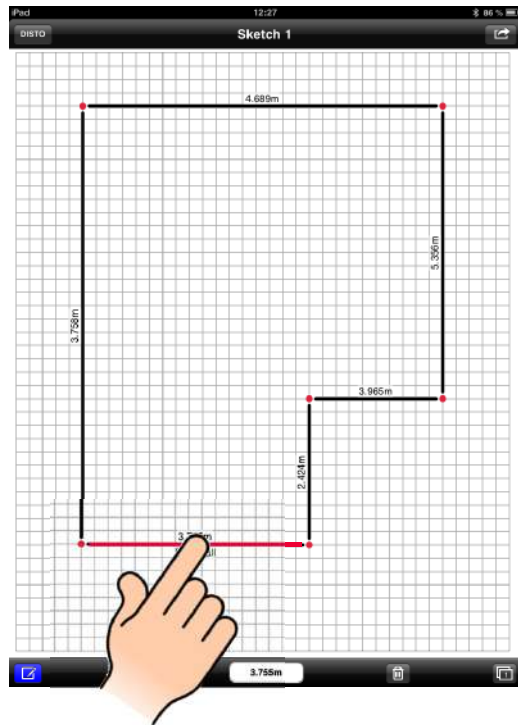


Areas, Volumes and Inclinations are added with a symbol

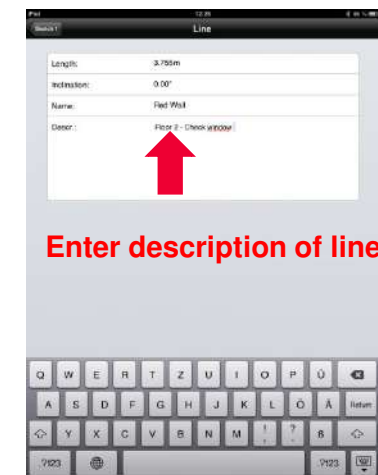
drag and drop value
- to a line if it is a distance
- to any position if it is an area, volume or inclination

Leica DISTO™ sketch iOS on an iPad mini

Name and Description for Line

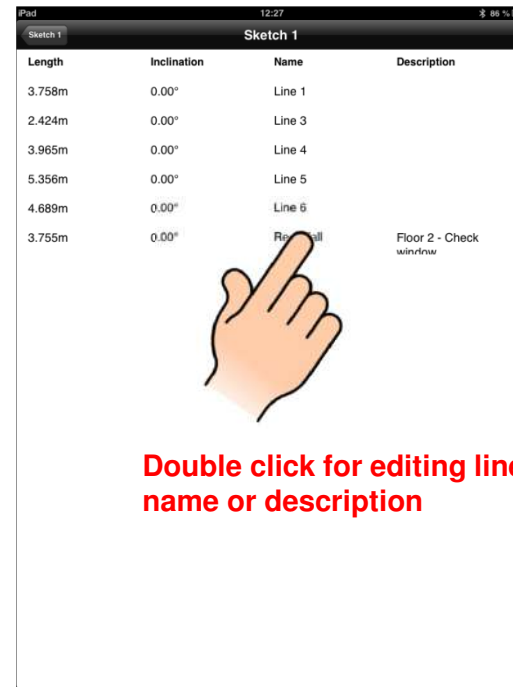
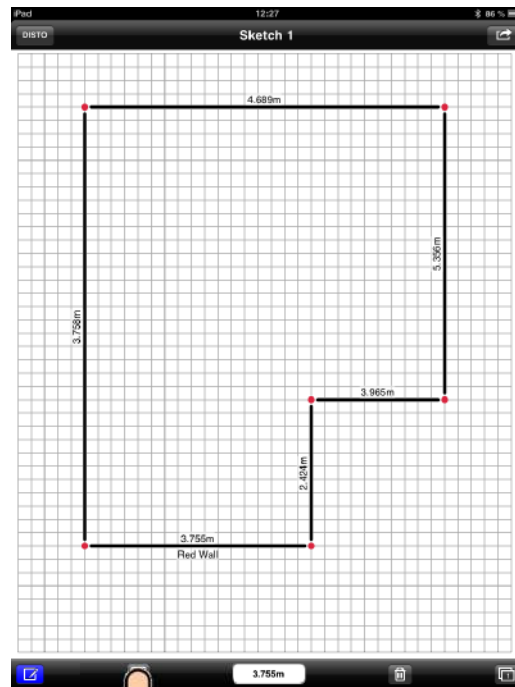


Double click line



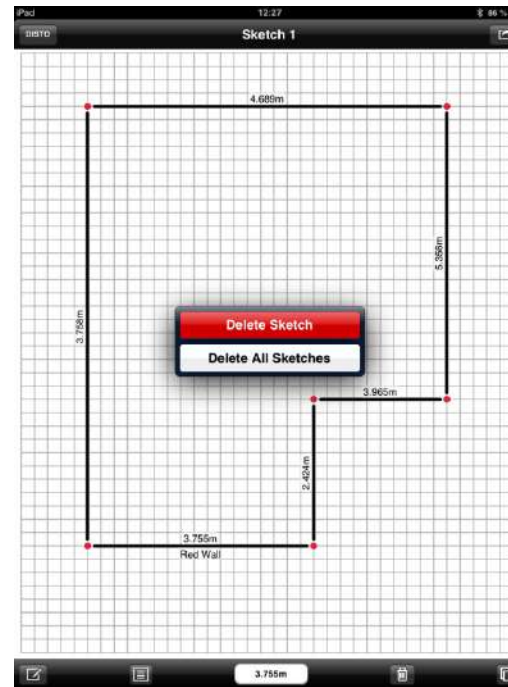
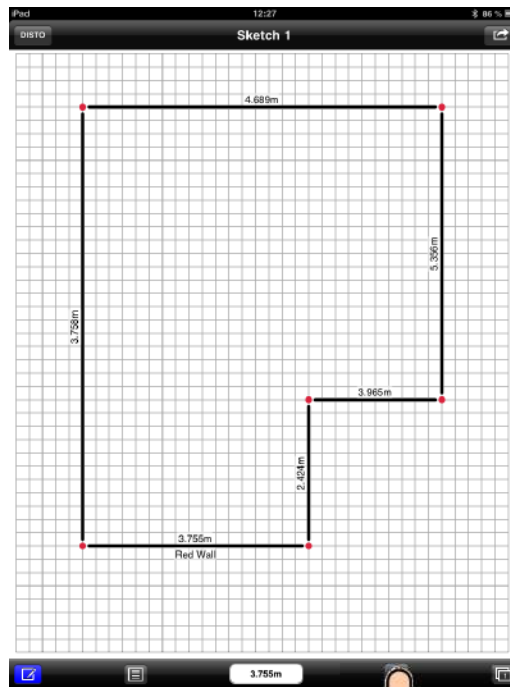
Leica DISTO™ sketch iOS on an iPad mini

Overview



Leica DISTO™ sketch iOS on an iPad mini

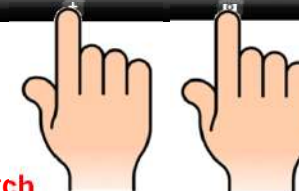
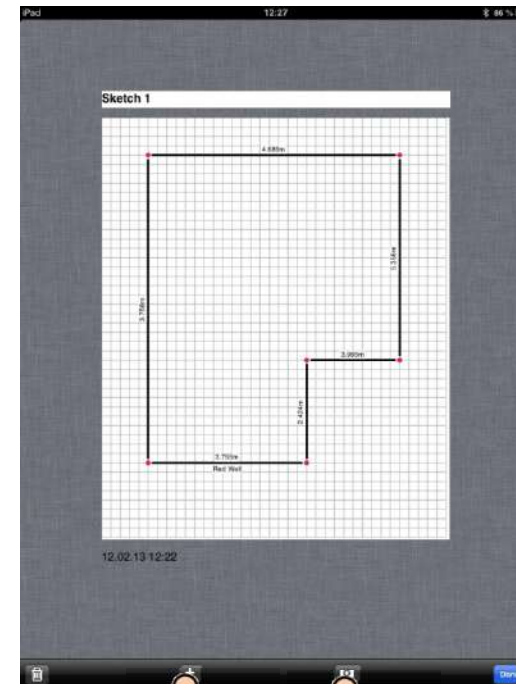
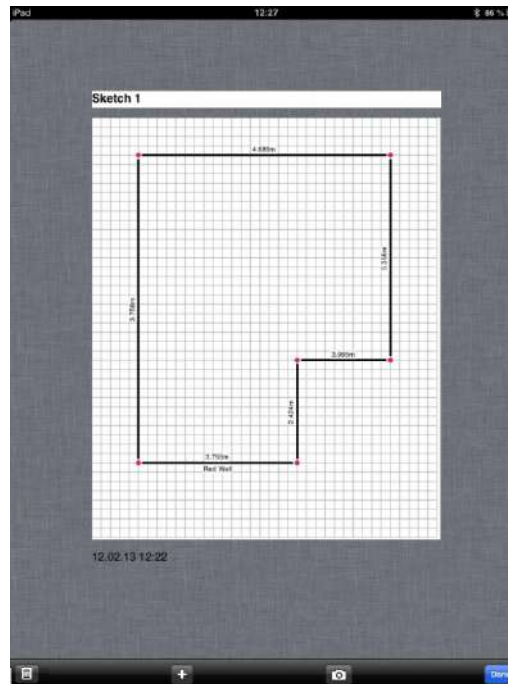
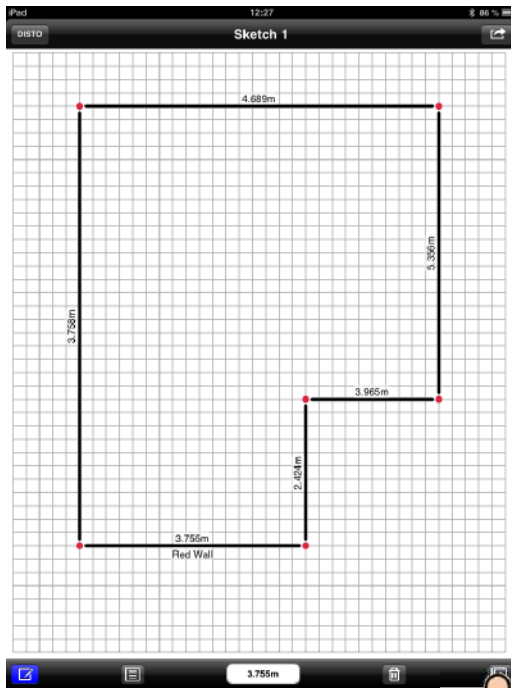
Delete single Sketch or all Sketches for new job



Deletes selected lines
or
opens menu to delete sketches

Leica DISTO™ sketch iOS on an iPad mini

Adding new Sketch

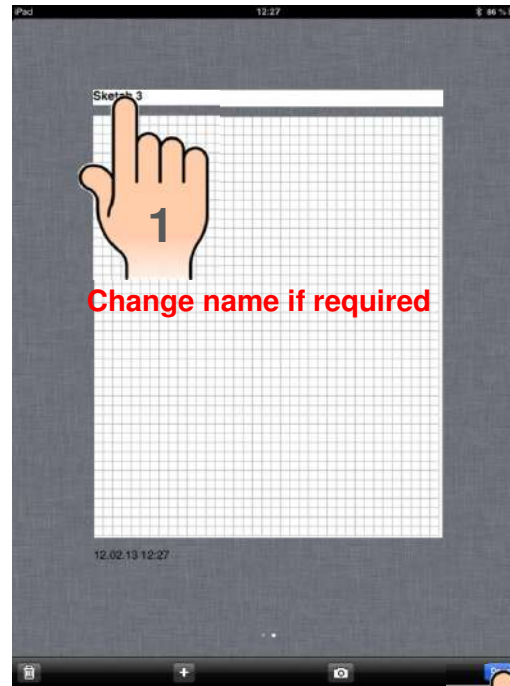
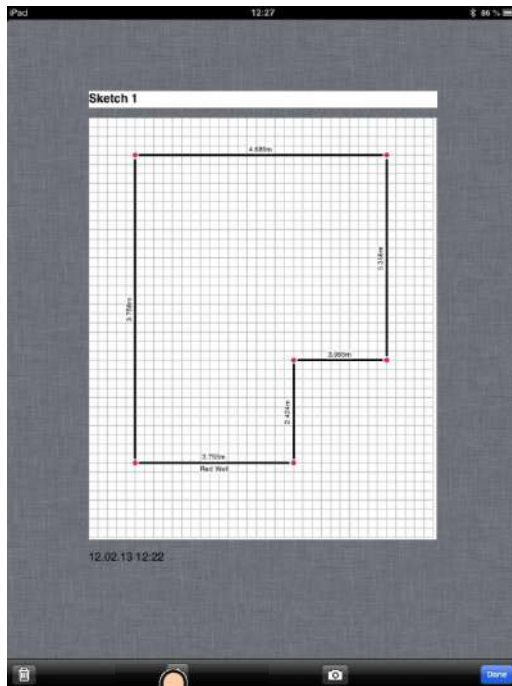


Choose Sketch
(gridded paper)

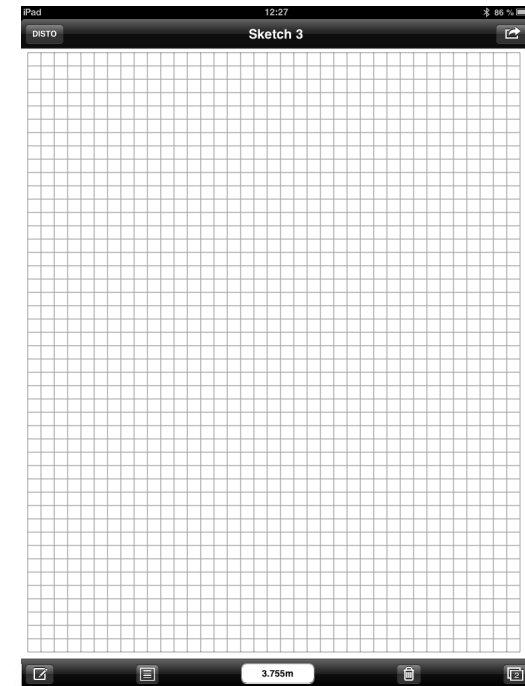
Choose for Picture
or Gallery import

Leica DISTO™ sketch iOS on an iPad mini

Adding new Sketch – Sketch (gridded paper)

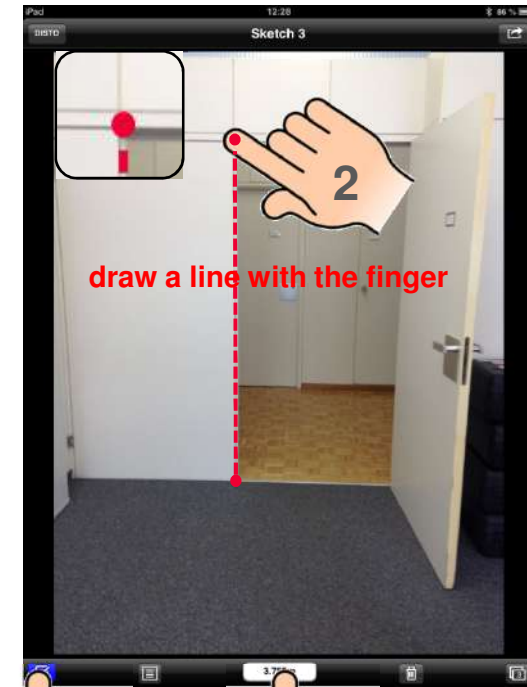
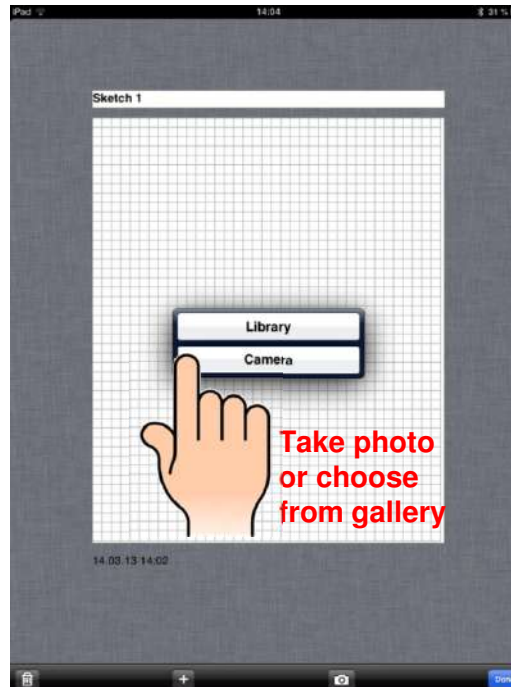
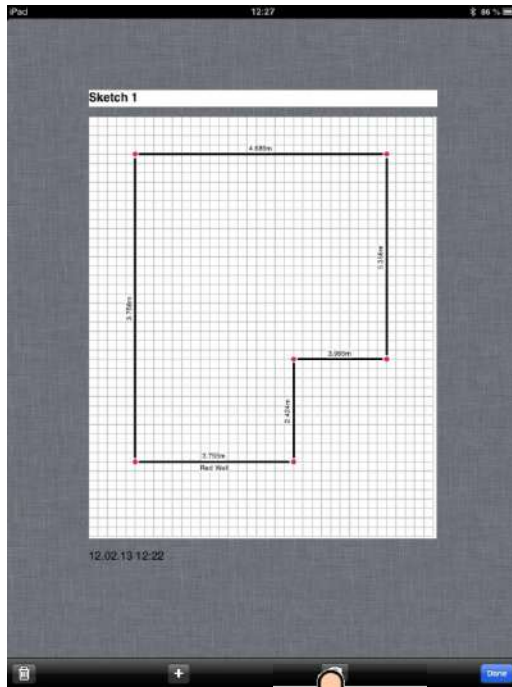


Change name if required



Leica DISTO™ sketch iOS on an iPad mini

Adding new Sketch – Sketch (take photo)



Chose the pen symbol

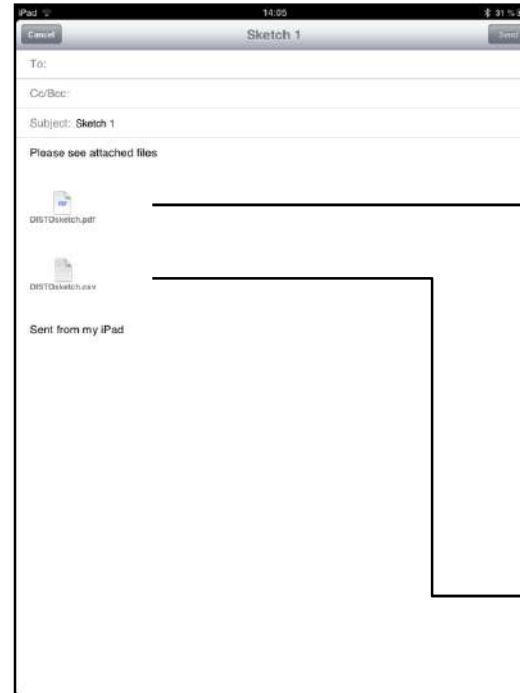
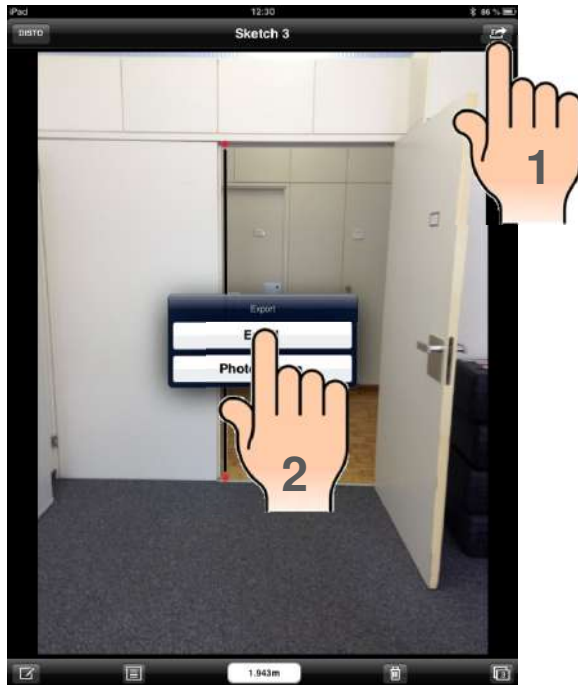
drag and drop value to line

- when it has to be right

Leica
Geosystems

Leica DISTO™ sketch iOS on an iPad mini

Export – Email

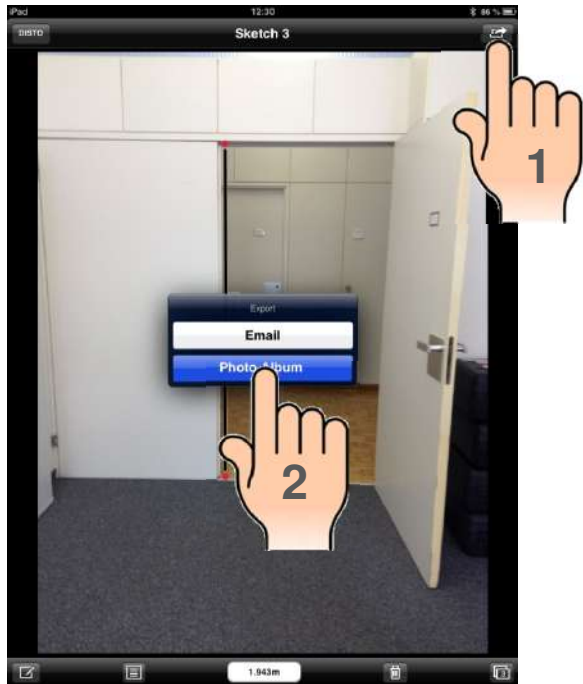


	A	B	C	D
1	Länge	Neigung	Name	Beschreibung
2	4,702m	0.00°		
3	2,527m	0.00°	Line 2	
4	2,134m	0.00°	Line 3	
5				
6				
7				

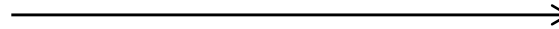
Import:
 Start Excel
 → Import data from text
 → chose filename
 → chose semicolon as separator

Leica DISTO™ sketch iOS on an iPad mini

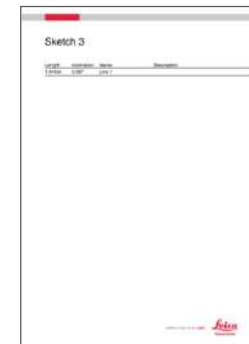
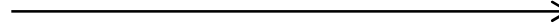
Export – Photo Album



png – file for download



png – file for download



Leica DISTO™ sketch iOS on an iPad mini

See Tutorial or DISTO™ sketch Video on YouTube

